

PEAKS, PEDALS AND PIONEERS

On this challenging six-day exploration of the island's wildest landscapes, a brilliant touring route from Hobart takes you through the World Heritage area to the West Coast then via Cradle Mountain to the wine valleys of the north.



DAY 1 After meeting at Hobart Airport we'll check-in to Wrest Point, on the shores of the River Derwent. Take an easy ride to Kingston, explore Hobart or just enjoy the ambience of Wrest Point. Get to know your companions over dinner in the spectacular 17th floor revolving restaurant, The Point.

DAY 2 There's some solid riding today – first we travel by coach into the highlands to Derwent Bridge, before beginning the challenging ride through Tasmania's mountainous World Heritage wilderness to Donaghy's Hill Lookout, with views to the Franklin River. We travel by bus to Queenstown then board the West Coast Wilderness Railway for the memorable journey by steam train to Strahan. At this harbourside village we'll check-in to our 4.5 star accommodation then enjoy a magnificent seafood buffet dinner in View 42 restaurant.

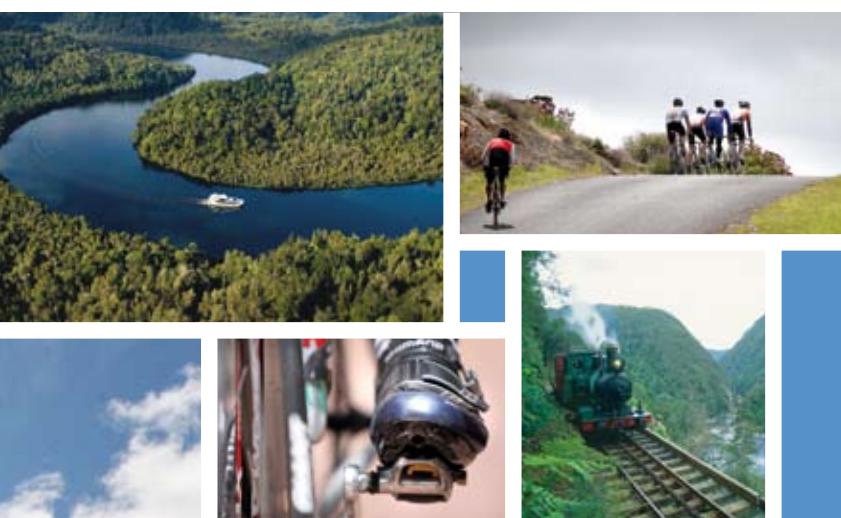
DAY 3 After breakfast, take an easy ride to the vast expanse of Ocean Beach and breathe the purest air on earth. Options today include a scenic flight over the wilderness by sea plane, a jet boat ride on the King River or the magnificent four-hour voyage with Gordon River Cruises across Macquarie Harbour and into the lower reaches of the Gordon.

DAY 4 We'll ride to Zeehan to explore this historic mining town then travel by bus towards Cradle Mountain. The last stage of the journey to Dove Lake at the foot of Tasmania's iconic peak is a challenging ride. After checking in to our indulgent accommodation at Cradle Mountain Wilderness Village, options in the afternoon include guided walks or a scenic flight by helicopter over the alpine landscape. Get together for a magnificent 3 course dinner in the Grey Gum a la carte restaurant.

DAY 5 After breakfast, there's an exhilarating and challenging ride northward through the mountains, then continue to the

spectacular arch of Devil's Gate Dam. We've all earned a delicious platter lunch and wine tasting at Barringwood Park Vineyard. After travelling by bus to Launceston we'll check-in to Country Club Tasmania – try the well-equipped health club, play tennis or enjoy a few holes on the championship golf course. Meet for a sensational dinner in the Terrace Restaurant.

DAY 6 Enjoy breakfast in The Links restaurant then there's the choice of an early morning light ride before returning to the Country Club to pack up. We'll travel together to the Tamar Valley to meet ex-Tour de France cyclist Michael Wilson, owner of Velo Vineyard. Join Michael for a farewell platter lunch and wine tasting. We'll transfer you to the airport or to your accommodation if you're staying on in Tasmania.



DISTANCES

Day 1 - 40km	Day 2 - 90km
Day 3 - 80km	Day 4 - 80km
Day 5 - 70km	Day 6 - 60km

TOTAL: 420km approximately

PRICES

\$2630
(Per person, twin share)
\$3250
(Per person, sole use)

Experience the essence of an island. truetasmania.com.au

BOOK NOW! Tanya and Dean Wilson | Phone: (03) 6427 3157 | Mobile: 0408 574 306 | DandTwilson@bigpond.com